



# Organic plant reproductive material for raspberries

**Sam Neefs**

**Proefcentrum Pamel**

**10/09/2020**



**PAMEL  
PROEFCENTRUM  
VLAAMS-BRABANT**

# Proefcentrum Pamel

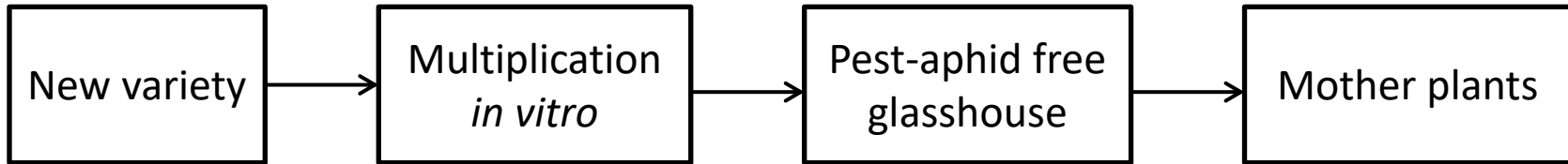
Small research center located close to Brussels.

Only organic research during the last 20 years.

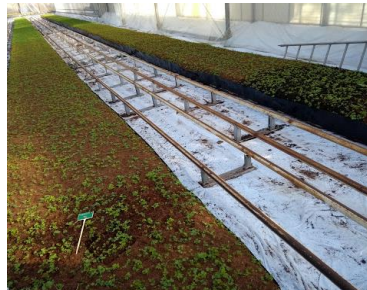
Experience in strawberries, raspberries and recently also Schaerbeek cherry.



# Production of floricanes

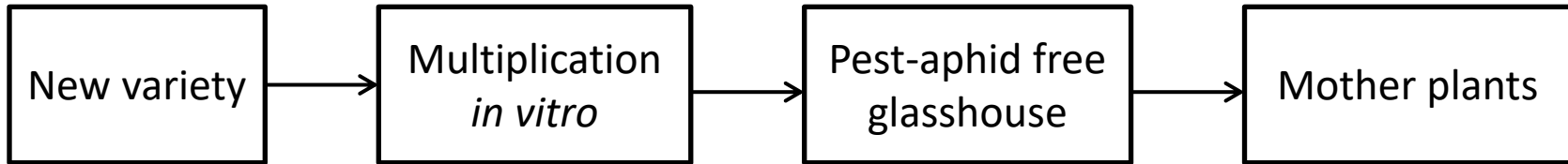


[www.Researchgate.net](http://www.Researchgate.net)

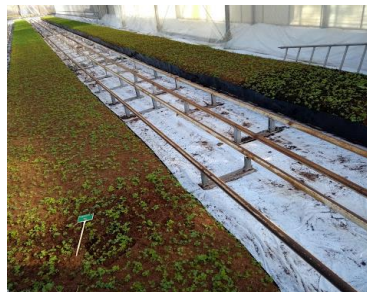




# Production of primocanes



[www.Researchgate.net](http://www.Researchgate.net)



[www.eetbaargoed.nl](http://www.eetbaargoed.nl)



# Plant reproductive material raspberries

**Longcanes**, will produce raspberries a few weeks after planting.

**Shortcanes**, are commonly used to generate new shoots from the roots to become new plants.

**Rooted cuttings from mother plants**. Can be used in spring for primocanes raspberries to produce in the same year.

Can be used in spring for floricanes to grow longcanes and to produce the next year.



## Situation in Belgium

Today there isn't organic raspberry plant material available in BE. For every planting of raspberries on an organic parcel the farmer has to ask for derogation or has to make a notification to his organic control agency.

Only bare root longcanes or shortcanes or rooted cuttings can be planted.

It is allowed to multiply in pots under organic conditions. From the moment the plants start to produce. They have to stand in the soil.





Thank you for your attention

Sam Neefs  
Proefcentrum Pamel  
[sam.neefs@vlaamsbrabant.be](mailto:sam.neefs@vlaamsbrabant.be)  
0032(0)54320846



PAMEL  
PROEFCENTRUM  
VLAAMS-BRABANT